



THE COLLEGE of
AGRICULTURAL SCIENCES



Survey 2018

—
Horst Caspari

Colorado State University
COLLEGE OF AGRICULTURAL SCIENCES





2018 Survey Highlights

Taking into account non-respondents:

- Largest grape production on record
 - Fourth year in a row with >2,000 ton production
 - Highest average yield per acre on record
 - At least 350 ton (~15 %) not utilized
-



Survey Summary

Survey numbers

- Survey forms send: 101
 - Survey forms returned: 79 (132 vineyard sites)
 - Rate of Return: 79 %
-



Survey Summary

Non-respondents

15 growers who provided information in 2017 have not yet responded.

- 34 acres (~4 % of total CO area)
- 75 tons in 2017 (~4 % of 2017 production)

There are likely another 200+ acres that are not covered in this or previous surveys.



2018 Colorado Grape Grower Survey

Definition

“Producing area”

- vineyards of producing age (≥ 3 years old)
 - vineyards planted prior to 2017
-

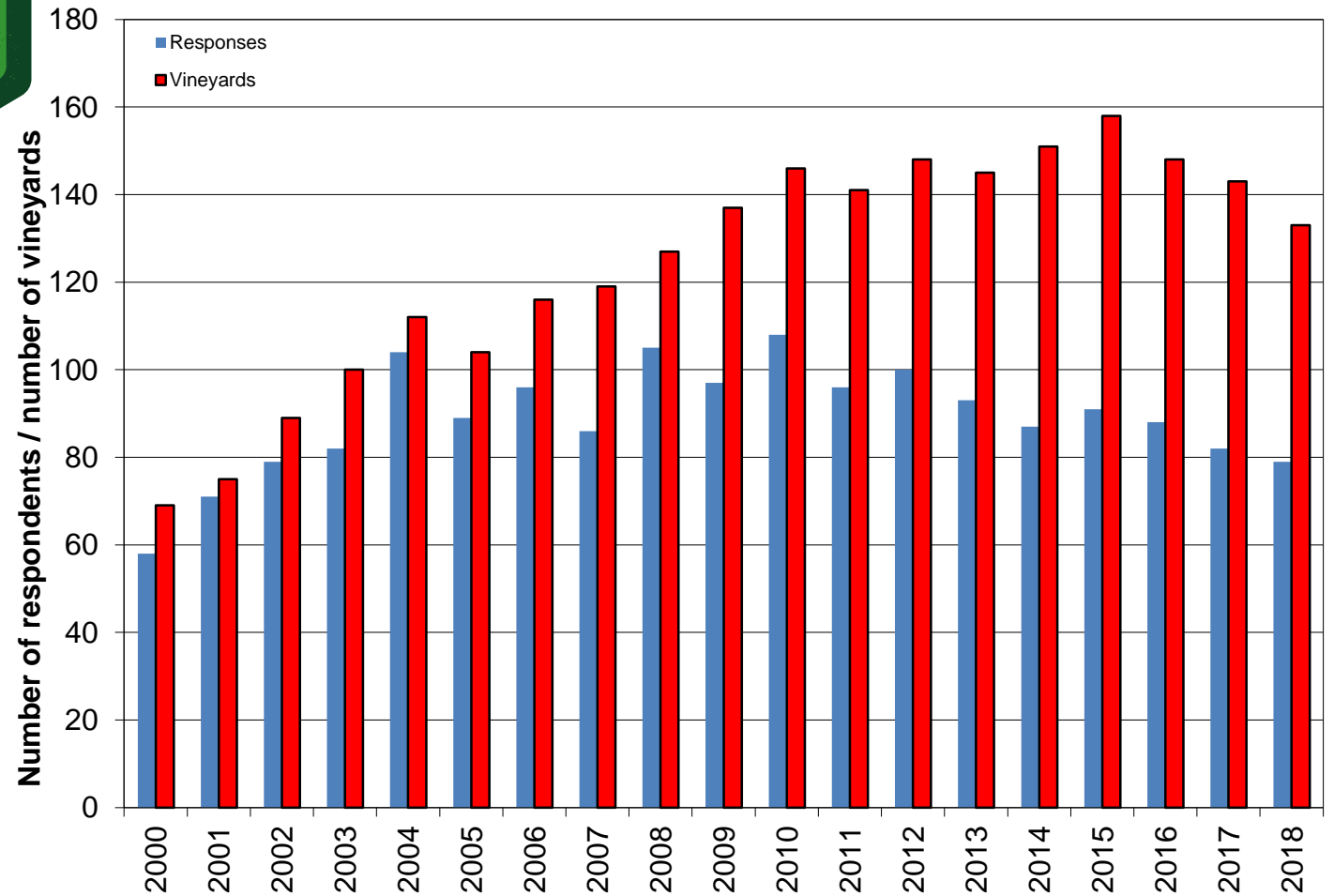


2018 Colorado Grape Grower Survey

Total vineyard area (acre)	601
Wineries	248 (42 %)
Contract growers	353 (58 %)
Producing vineyard area (acre)	584
Wineries	245 (42 %)
Contract growers	339 (58 %)
Average vineyard holding (acre)	7.6
Median vineyard holding (acre)	2.9
Total production (t)	2,261
Average yield (t/acre)	3.87
Average grape price (\$/t)	\$1,675
Average grape revenue (\$/acre)	\$7,441

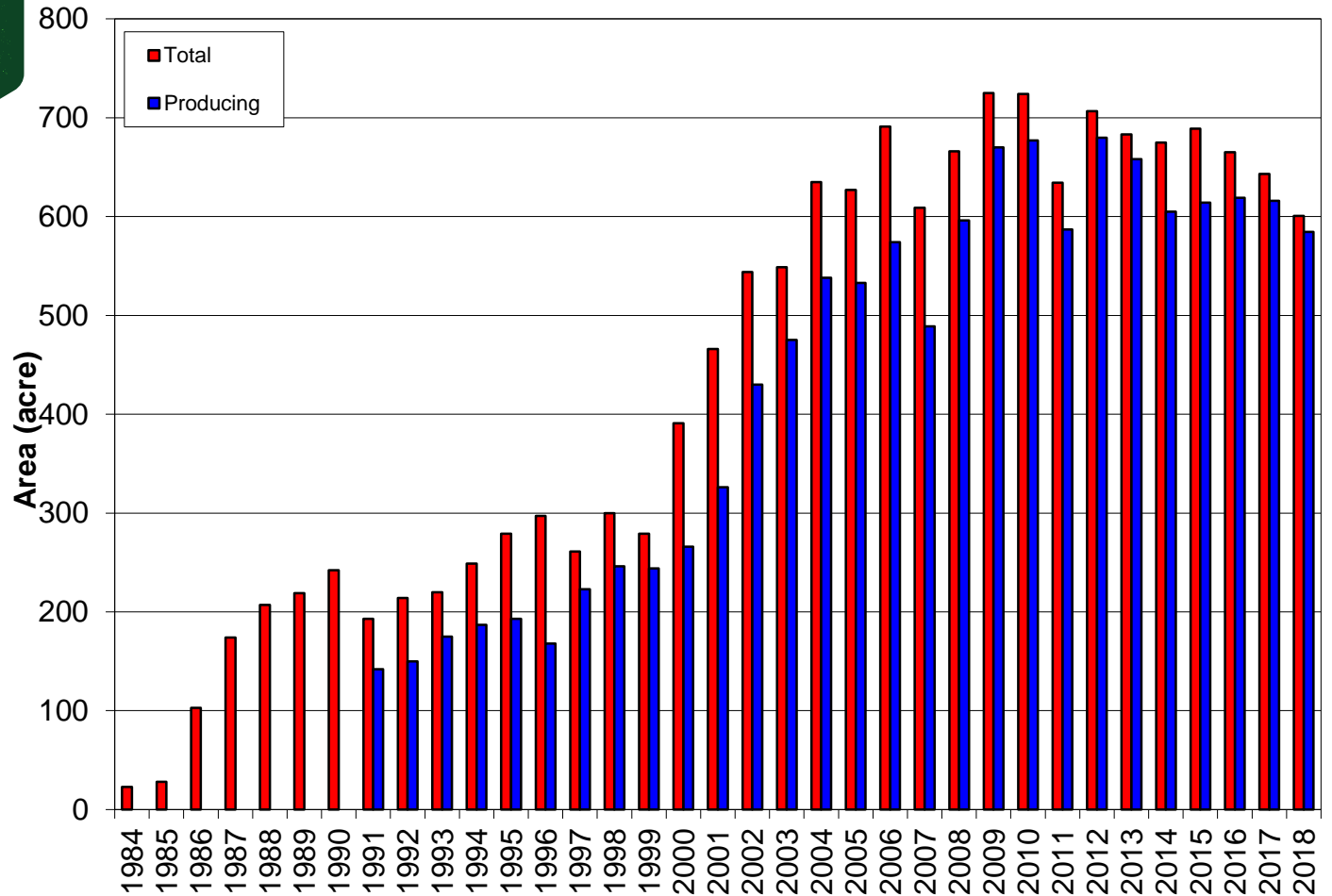


Number of survey responses and number of vineyards



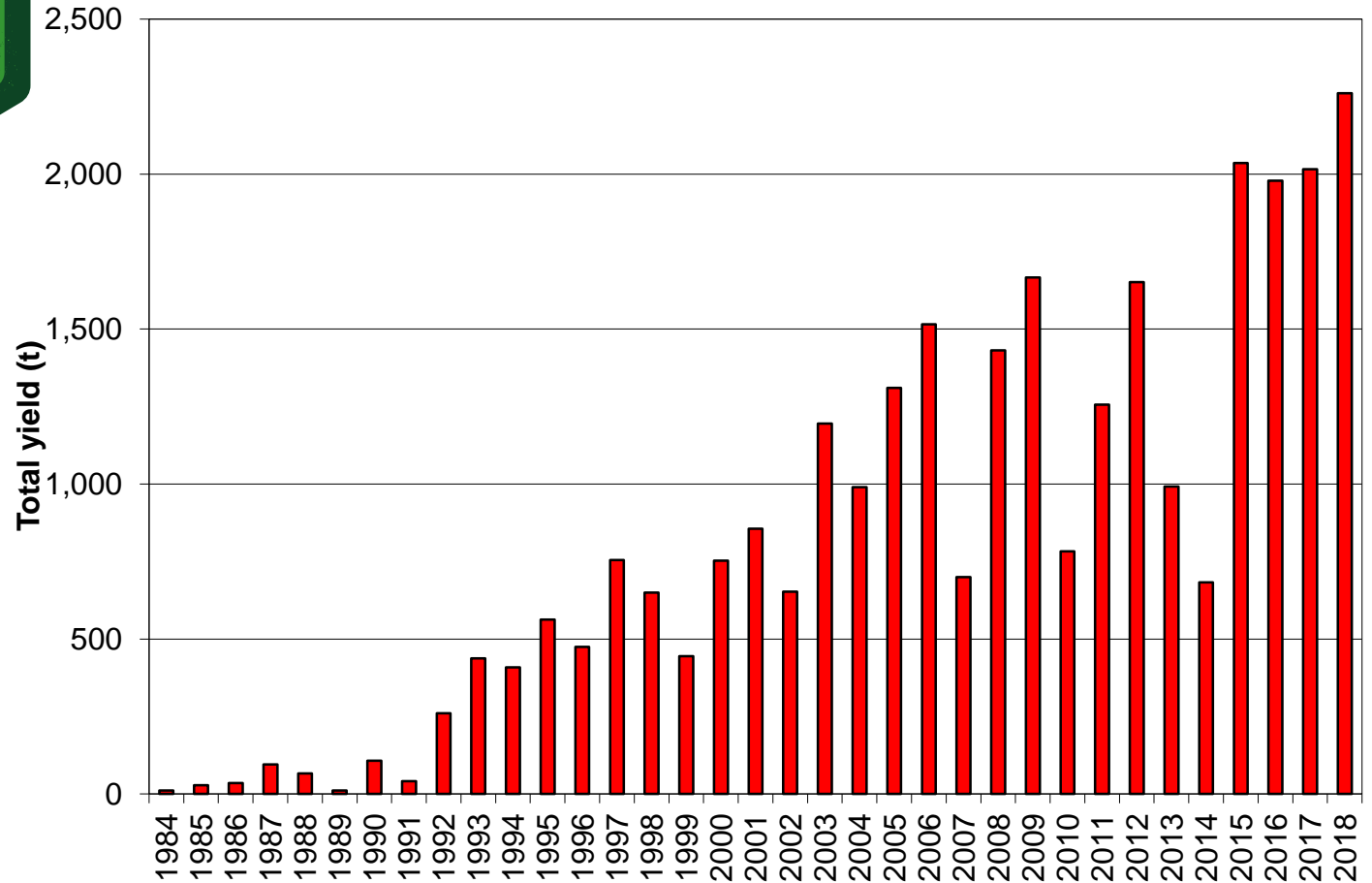


Acres reported by survey year



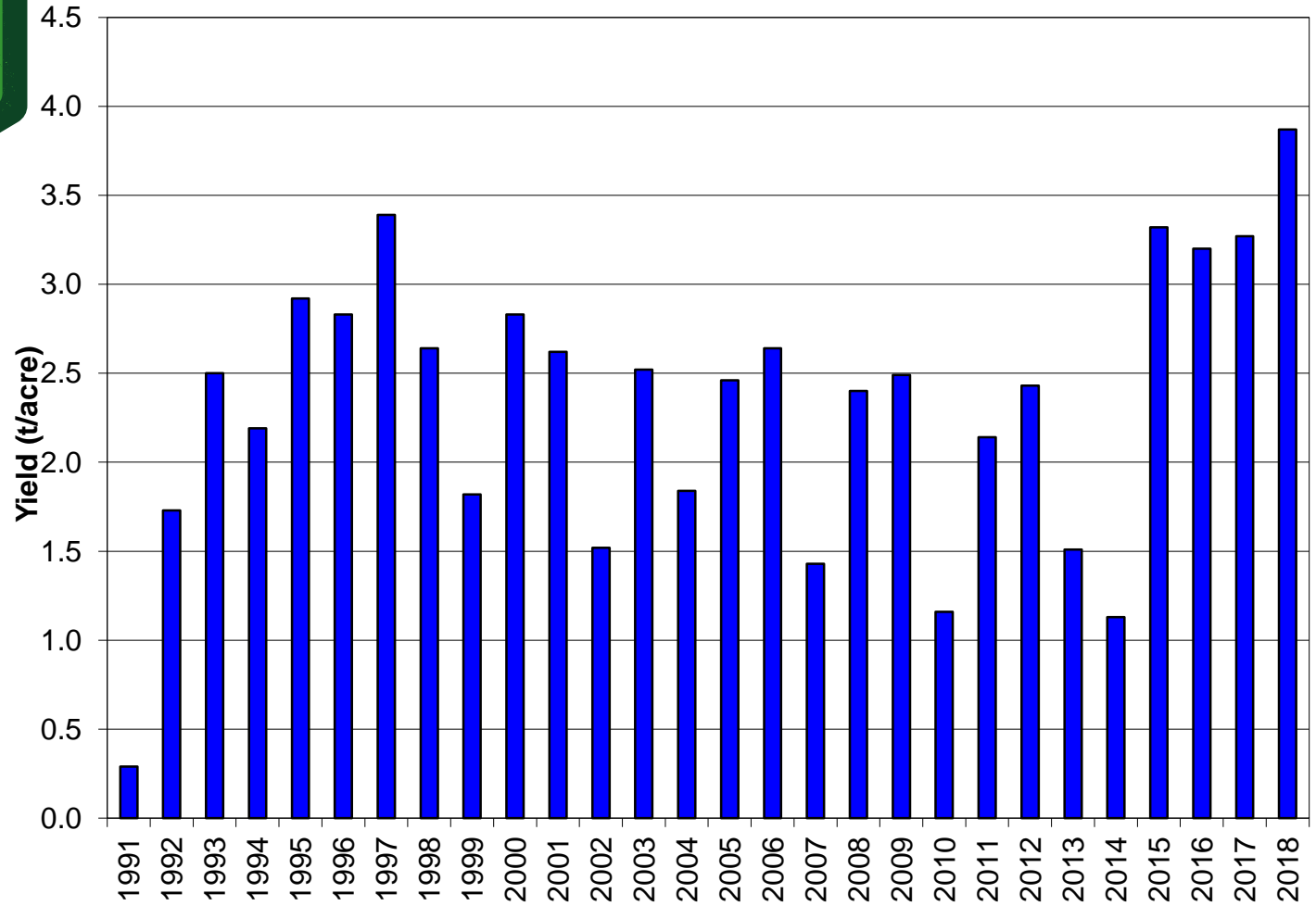


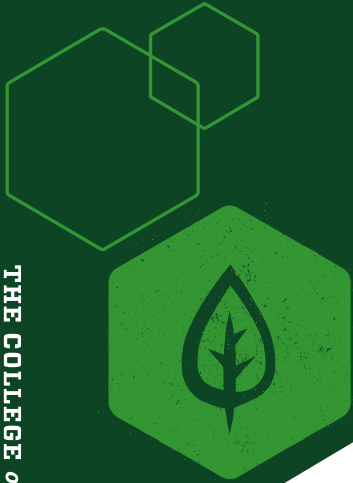
Colorado grape production by year



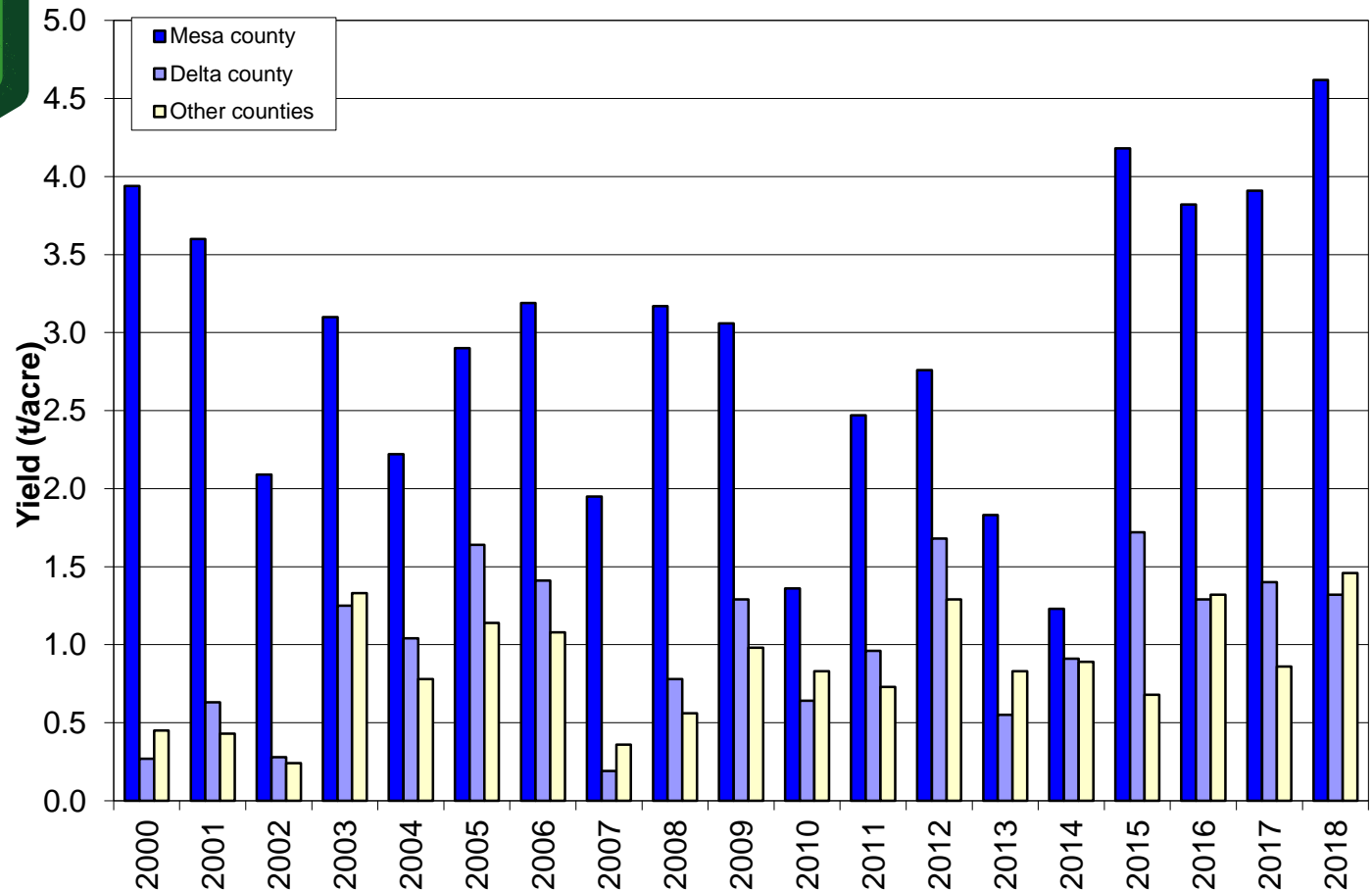


Colorado grape yield per acre & year

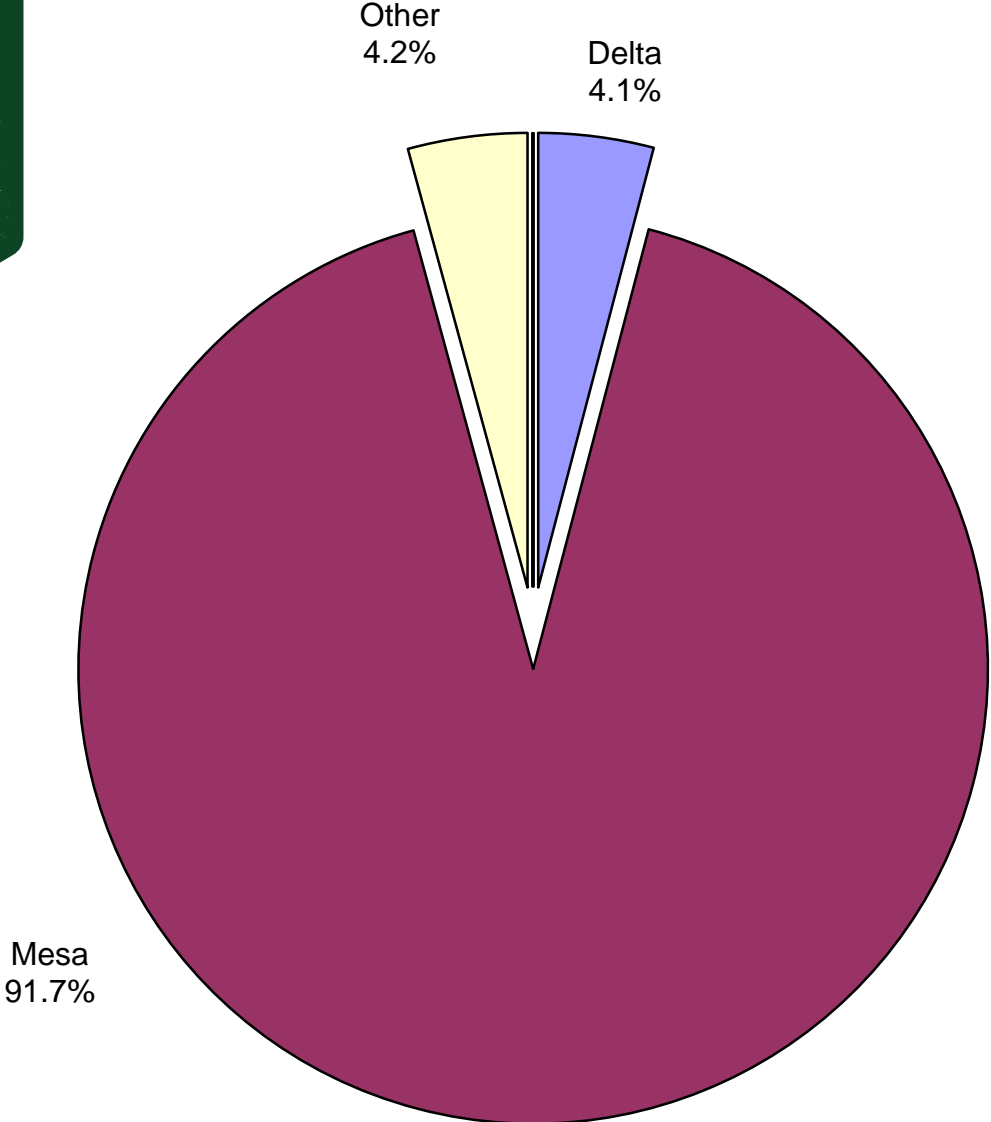




Colorado grape yield by county & year

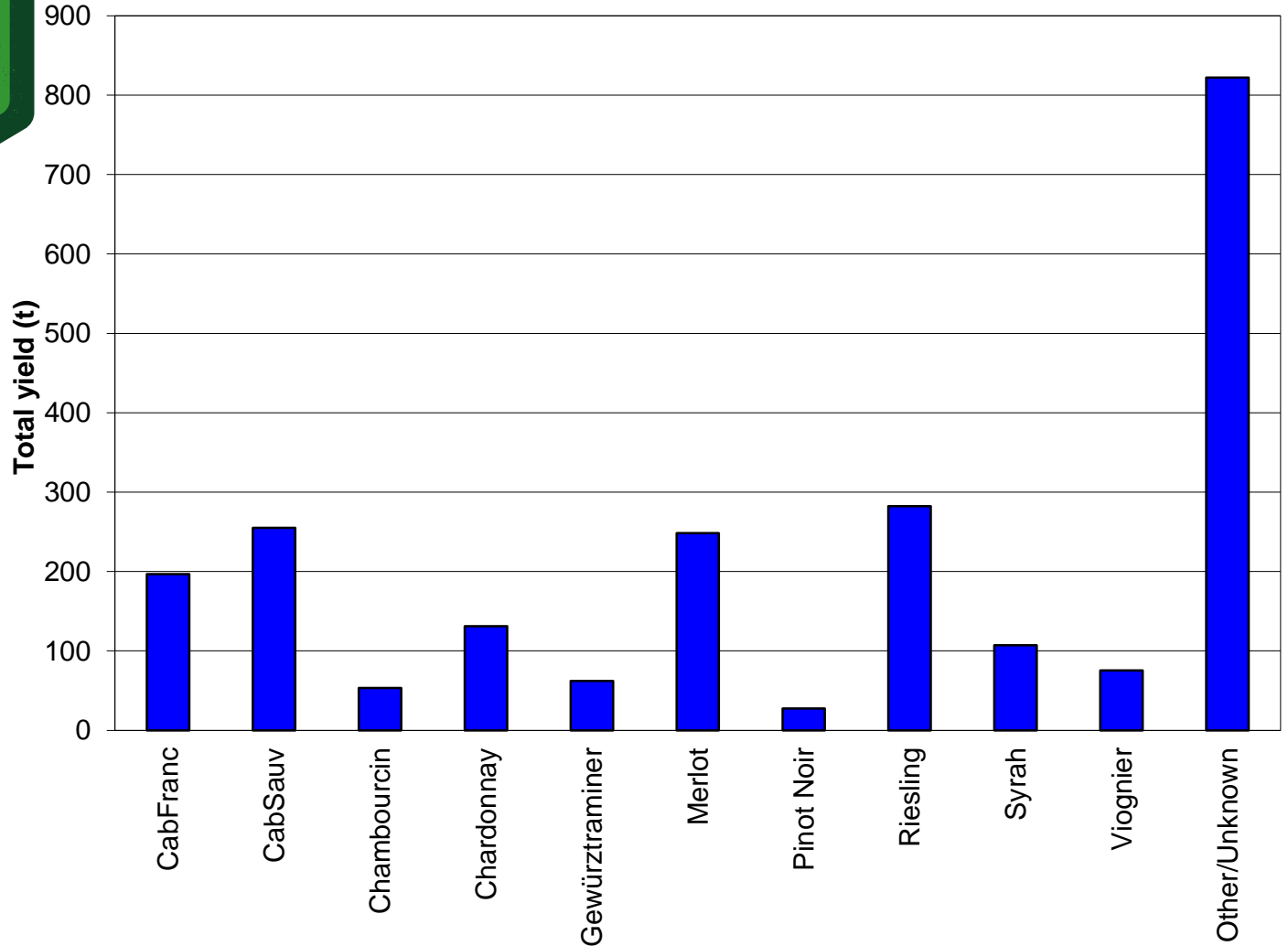


Colorado grape production by county

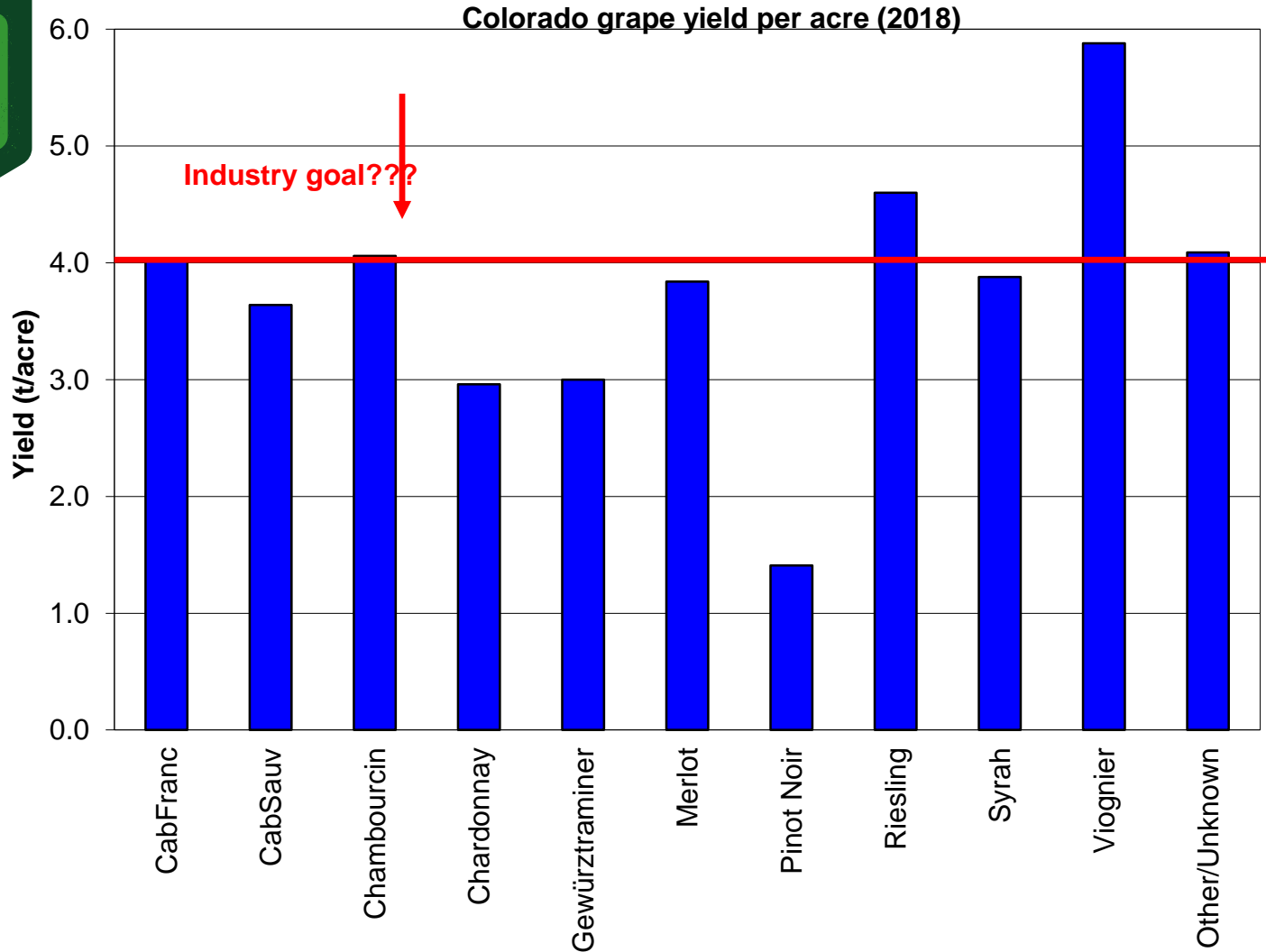




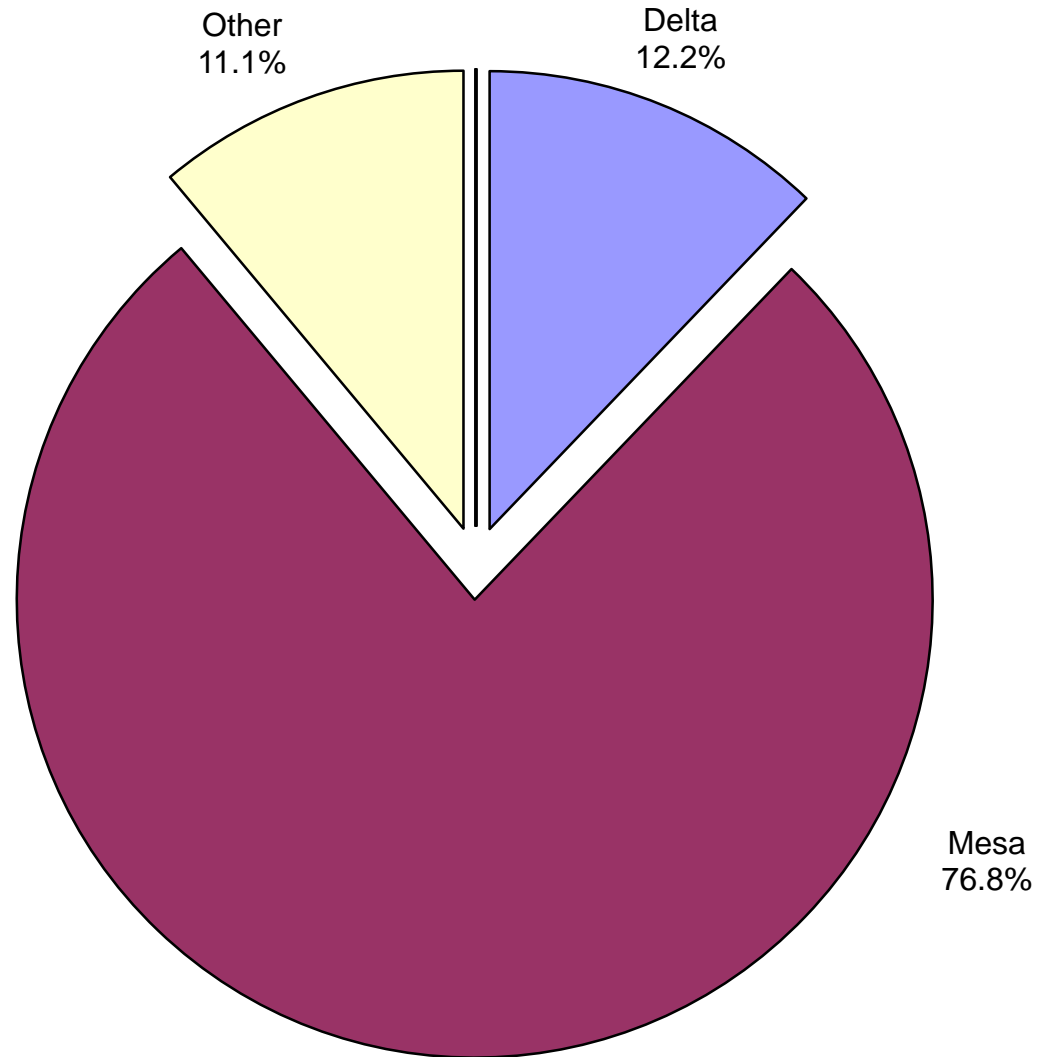
Colorado grape production by variety



Colorado grape yield per acre & variety



Colorado vineyard area by county





2018 Colorado Grape Grower Survey

Most planted varieties in 2018

Cabernet franc and Cabernet Sauvignon

Very few new plantings (<10 acres)

Acres removed = acres planted???



2018 Colorado Grape Grower Survey

Most popular varieties (2018)

- ~90 % of new plantings are varieties of *Vitis vinifera*
 - ~10 % of new plantings are non-*vinifera* varieties
-



2018 Colorado Grape Grower Survey

Impressions

- There was a large surplus of grapes, with overall winery demand and grower supply much more out of balance than in the previous three years
 - Non-utilized crop was around 350 to 400 ton, compared to about 50 ton in 2017
 - Grape prices for all major varieties were very close to 2017 values, but the overall average price was down 2.6 %
-



2018 Colorado Grape Grower Survey

Thank you

- All the growers who have responded to the survey
 - CWIDB for funding the survey
-



Questions?

Dr. Horst Caspari

**Department of Horticulture & Landscape Architecture
Colorado State University**

**Western Colorado Research Center – Orchard Mesa
Grand Junction, CO 81503**

Ph: (970) 434-3264

horst.caspari@colostate.edu